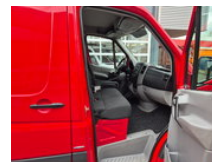
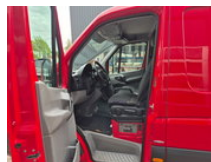


Mercedes-Benz Sprinter 316 CDI L2/ Automaat/ Camera/ Navi

General features

Brand	Mercedes-Benz
Model	Sprinter
Subcategory	Closed
Licence plate	VL-476-H
Odometer reading	106.385km
Construction year	2015
Date of first registration	02-01-2015
Color	Red
Condition	Used
General condition	Very good
Fuel	Diesel
Emission class	Euro 5
Reference	VL476H



Characteristics

Empty weight	2.142kg
Load capacity	1.058kg
GVW	3.200kg
Length	593cm
Width	199cm
Cabin	No
Door count	5
Cylinder contents	2.143cc

Mercedes-Benz Sprinter 316 CDI L2/ Automaat/ Camera/ Navi

Technical specifications

Number of axes	2
Axis configuration	4x2
Transmission	Automatic
Power	120

Description

Video of working vehicle: <https://youtu.be/0JCZLVlgUko> Very neat Mercedes Sprinter 316 CDI L2 Automatic Year of manufacture 2015 Camera Navigation Cruise control 106,000 KM verifiable with NAP

Accessories

-
- Onboard Computer
- Immobilizer
- Anti-lock braking system
- Air conditioning
- Leaf spring suspension
- Cruise control
- Parabolic suspension
- Spare wheel
- Particulate filter
- Trailer coupling
- Power steering
- Airbags
- Central doorlocking
- Electric windows
- Climate control
- Side Door Right
-
- Multifunctional Steering Wheel
-
- Elektric mirrors
- Seat heating
- USB Connection